




17037 Kerrick Court | Lakeville

\$559,900

This beautiful townhome, located in a private cul-de-sac, offers an open floor plan, expansive windows with great wooded wetland views, a walkout lower level, and more!

-  3 bed
-  3 bath
-  2 car

Lakeville School District

3,281 Sq. Ft.

\$287 Monthly Fee

### Key Features

- Hardwood floors
- Gourmet kitchen
- Great room with fireplace
- Master suite
- Walkout lower level
- Screened-in porch

This home was realized and designed by Minnesota's leading builder of luxury custom homes, Wooddale Builders.

# 17037 Kerrick Court, Lakeville, MN

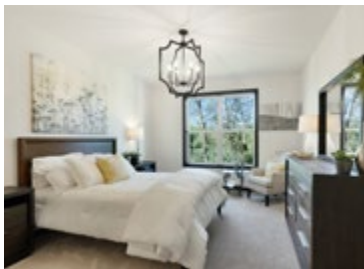
## Exterior Features

- Beautiful landscape details
- In-ground sprinkler system
- Walkout patio on the lower level
- Screened-in porch
- Two-car heated garage



## Interior Features

- Open, spacious floor plan featuring a study and great room with fireplace
- Main level master suite with walk-in closet and bathroom with double vanity
- Gourmet kitchen with quartz countertops, center island, and walk-in pantry
- Walkout lower-level family room with endless windows, two additional bedrooms, and a bathroom



**Kevin Sperle**

612-850-8892

kevinsperle@edinarealty.com

**Cindy Jarvis**

612-600-4119

cindyjarvis@edinarealty.com

**Edina Realty**

a Berkshire Hathaway affiliate

  
**WOODDALE**  
BUILDERS